



USER'S GUIDE  
V:1641-0316-11



# PD951

## 9" Portable DVD Player

---

For the most up-to-date version of this User's Guide, go to [www.gpx.com](http://www.gpx.com)

# Warnings and Precautions

- **CAUTION:** TO PREVENT ELECTRIC SHOCK, MATCH WIDE BLADE OF PLUG TO WIDE SLOT, FULLY INSERT.
- **WARNING:** To reduce the risk of fire or electric shock, do not expose this apparatus to rain or moisture.
- **AVERTISSEMENT:** Pour réduire le risque d'incendie ou de choc électrique, ne pas exposer cet appareil sous la pluie et l'humidité.
- **CAUTION:** Use of any controls or adjustments or performance of procedures other than those herein specified may result in hazardous radiation exposure.
- **WARNING:** Changes or modifications to this unit not expressly approved by the party responsible for compliance could void the user's authority to operate the equipment.
- **WARNING:** Do not place the unit on top of any soft, porous, or sensitive surfaces to avoid damaging the surface. Use a protective barrier between the unit and surface to protect the surface.
- **WARNING:** Use of this unit near fluorescent lighting may cause interference regarding use of the remote. If the unit is displaying erratic behavior move away from any fluorescent lighting, as it may be the cause.
- **CAUTION:** Danger of explosion if battery is incorrectly replaced. Replace only with the same or equivalent type.
- **PRÉCAUTION:** *Danger d'explosion si les piles sont remplacées de façon incorrect. Remplacer les piles seulement par le même type de pile ou l'équivalent.*
- **WARNING:** There is a danger of explosion if you attempt to charge standard Alkaline batteries in the unit. Only use rechargeable NiMH batteries.
- **WARNING:** The battery, batteries, and battery pack shall not be exposed to excessive heat such as sunshine, fire, or the like.

- **WARNING:** Lithium batteries, like all rechargeable batteries are recyclable and should be recycled or disposed of in normal household waste. Contact your local government for disposal or recycling practices in your area. They should never be incinerated since they might explode.
- **WARNING:** Shock hazard - Do Not Open.
- **AVIS: RISQUE DE CHOC ÉLECTRIQUE - NE PAS OUVRIR**

Mains Plug or Direct plug-in adapter is used as disconnect device and it should remain readily operable during intended use. In order to disconnect the apparatus from the mains completely, the Mains Plug or Direct plug-in adapter should be disconnected from the mains socket outlet completely.

*La fiche d'alimentation ou adaptateur de courant est utilisé comme dispositif de déconnexion et doit rester accessible pendant l'utilisation. Pour mettre l'appareil hors tension, la fiche ou adaptateur de courant doit être débranché de la prise de courant.*

Do not mix old and new batteries.  
Do not mix alkaline, standard (carbon-zinc), or rechargeable (ni-cad, ni-mh, etc) batteries.  
*No mezcle baterías viejas y nuevas.  
No mezcle baterías alcalinas, estándar (carbón-zinc) o recargables (ni-cad, ni-mh, etc.).*



**WARNING:** TO REDUCE THE RISK OF ELECTRIC SHOCK, DO NOT REMOVE COVER (OR BACK). NO USER-SERVICEABLE PARTS INSIDE. REFER SERVICING TO QUALIFIED SERVICE PERSONNEL.



The lightning flash with arrowhead symbol, within an equilateral triangle, is intended to alert the user to the presence of uninsulated "dangerous voltage" within the product's enclosure that may be of sufficient magnitude to constitute a risk of electric shock to persons.




The exclamation point within an equilateral triangle is intended to alert the user to the presence of important operating and maintenance (servicing) instructions in the literature accompanying the appliance.



This product utilizes a Class 1 laser to read Compact Discs. This laser Compact Disc Player is equipped with safety switches to avoid exposure when the CD door is open and the safety interlocks are defeated. Invisible laser radiation is present when the CD Player's lid is open and the system's interlock has failed or been defeated. It is very important that you avoid direct exposure to the laser beam at all times. Please do not attempt to defeat or bypass the safety switches.

# Important Safety Instructions

1. Read these Instructions.
  2. Keep these Instructions.
  3. Heed all Warnings.
  4. Follow all instructions.
  5. Do not use this apparatus near water.
  6. Clean only with a dry cloth.
  7. Do not block any ventilation openings. Install in accordance with the manufacturer's instructions.
  8. Do not install near any heat sources such as radiators, heat registers, stoves, or other apparatus (including amplifiers) that produce heat.
  9. Do not defeat the safety purpose of the polarized or grounding - type plug. A polarized plug has two blades with one wider than the other. A grounding type plug has two blades and a third grounding prong. The wide blade or the third prong are provided for your safety. When the provided plug does not fit into your outlet, consult an electrician for replacement of the obsolete outlet.
  10. Protect the power cord from being walked on or pinched particularly at plugs, convenience receptacles, and the point where they exit from the apparatus.
  11. Only use attachments/accessories specified by the manufacturer.
- 
12.  Use only with a cart, stand, tripod, bracket, or table specified by the manufacturer, or sold with the apparatus. When a cart is used, use caution when moving the cart/apparatus combination to avoid injury from tip-over.
- 

13. Unplug this apparatus during lightning storms or when unused for long periods of time.
  14. Refer all servicing to qualified service personnel. Servicing is required when the apparatus has been damaged in any way, such as power-supply cord or plug is damaged, liquid has been spilled or objects have fallen into the apparatus, the apparatus has been exposed to rain or moisture, does not operate normally, or has been dropped.
- 

**Special note:** When placing your unit on a lacquered or natural finish, protect your furniture with a cloth or other protective material.

## FCC Warnings

**WARNING:** Changes or modifications to this unit not expressly approved by the party responsible for compliance could void the user's authority to operate the equipment.

**NOTE:** This equipment has been tested and found to comply with the limits for a Class B digital device, pursuant to Part 15 of the FCC Rules. These limits are designed to provide reasonable protection against harmful interference in a residential installation. This equipment generates, uses, and can radiate radio frequency energy and, if not installed and used in accordance with the instructions, may cause harmful interference to radio communications. However, there is no guarantee that interference will not occur in a particular installation. If this equipment does cause harmful interference to radio or television reception, which can be determined by turning the equipment off and on, the user is encouraged to try to correct the interference by one or more of the following measures:

- Reorient or relocate the receiving antenna.
- Increase the separation between the equipment and receiver.
- Connect the equipment into an outlet on a circuit different from that to which the receiver is connected.
- Consult the dealer or an experienced radio/TV technician for help.

## Additional Warnings

- The apparatus shall not be exposed to dripping or splashing and that no objects filled with liquids, such as vases, shall be placed on apparatus.  
*L'appareil ne doit pas être exposé aux écoulements ou aux éclaboussures et aucun objet ne contenant de liquide, tel qu'un vase, ne doit être placé sur l'objet.*
  - Battery shall not be exposed to excessive heat such as sunshine, fire or the like.  
*Les piles ne doivent pas être exposées à de forte chaleur, tel qu'à la lumière du soleil, au feu ou autres choses de semblable.*
  - Caution marking is located at the rear or bottom of the apparatus.  
*Attention marquage est situé sur le panneau arrière ou inférieur de l'unité.*
  - The marking information is located at the rear or bottom of apparatus.  
*Le marquage est situé sur le panneau arrière ou inférieur de l'unité.*
- 



This symbol indicates that this product incorporates double insulation between hazardous mains voltage and user accessible parts.

This product incorporates copyright protection technology that is protected by U.S. patents and other intellectual property rights. Use of this copyright protection technology must be authorized by Rovi Corporation, and is intended for home and other limited viewing uses only unless otherwise authorized by Rovi Corporation. Reverse engineering and disassembly are prohibited.

## DVD Player

### Features

- DVD player: DVD, DVD±R/RW
- CD player: CD, CD-R/RW, JPEG CD
- 9" TFT LCD display
- Convertible tablet design
- USB port & SD card reader
- Aspect ratio: 16:9
- 3.5mm audio/video output
- 3.5mm audio/video input
- Stereo headphone jack
- Built-in speakers
- Full function remote
- Multi-language on-screen display
- NTSC video system
- Built-in rechargeable battery
- DC power input

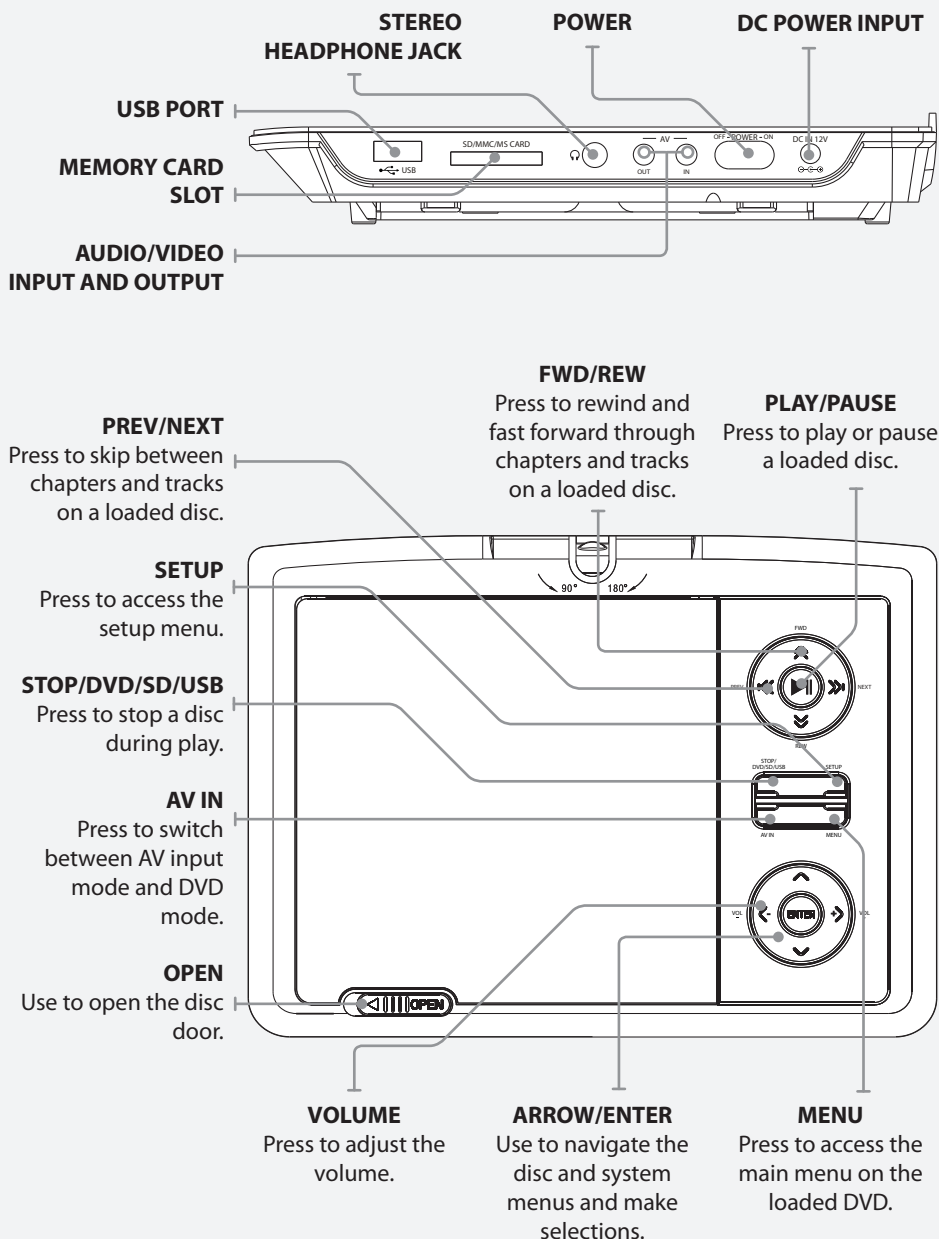
### Included

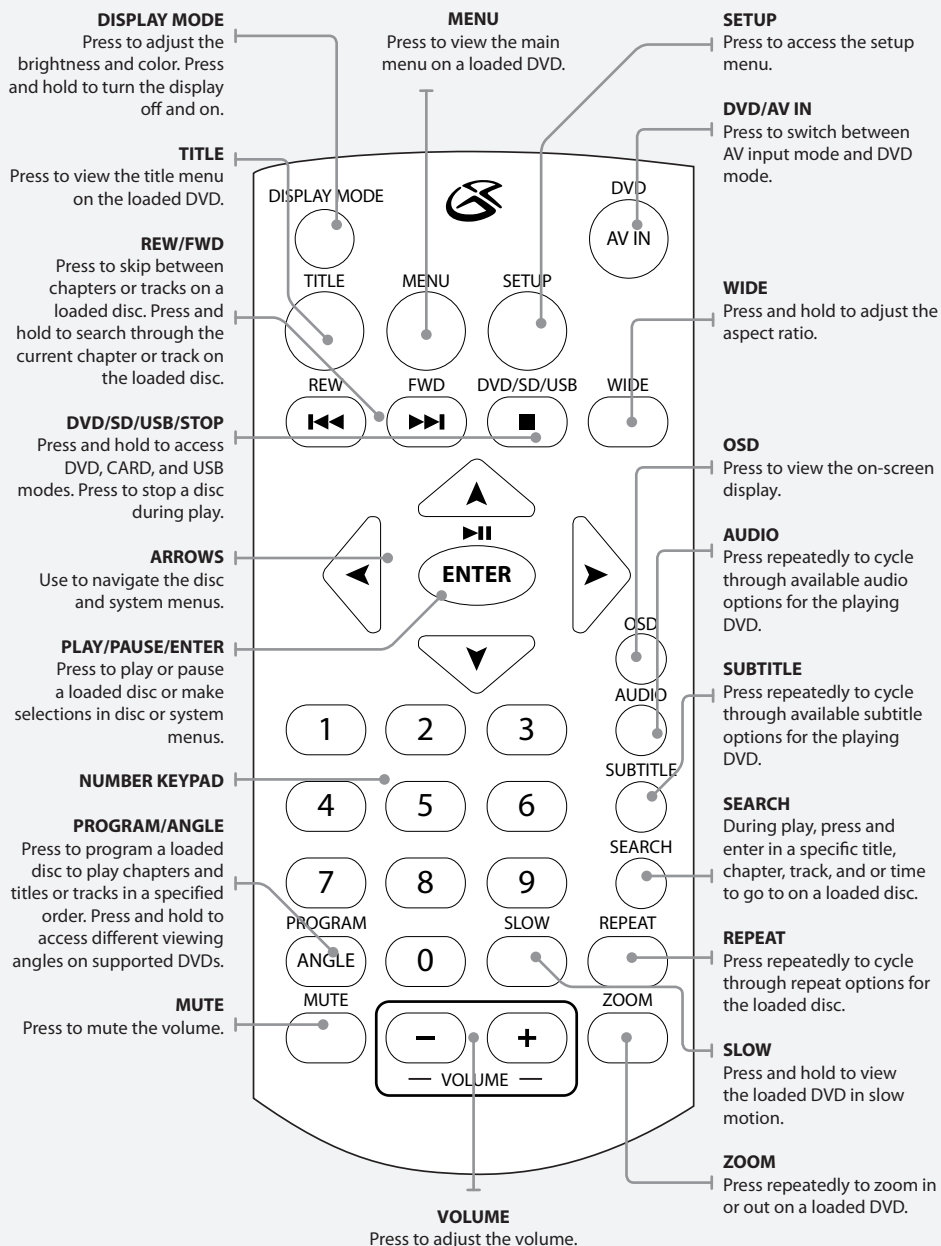
- Remote control: requires 2 AAA batteries (not included)
- 3.5mm-RCA audio/video adapter
- One set of stereo earbuds
- AC/DC power adapter
- 12V DV car adapter

## Table of Contents

<b>DVD Player</b> .....	4
Features	
Included	
<b>Table of Contents</b> .....	5
<b>Introduction</b> .....	6
<b>Setup</b> .....	8
Power	
Battery Power	
Remote	
Charging the Built-in Battery	
<b>DVD, CD, and Setup Menu</b> .....	9
Loading a Disc	
Playing a Loaded Disc	
Programming a Loaded Disc	
Accessing the Setup Menu	
Setup Menu Contents	
<b>Using a USB Thumb Drive or Memory Card</b> .....	10
Connecting a USB Thumb Drive	
Accessing Content on a USB Drive	
Connecting a Memory Card	
Accessing Content on a Memory Card	
<b>Audio/Video Output and Input</b> .....	11
Using the 3.5mm Audio/Video Output	
Using the 3.5mm Audio/Video Input	
<b>Company Information</b> .....	12
International Support	
Contact Information	
Green Initiative	

## Introduction



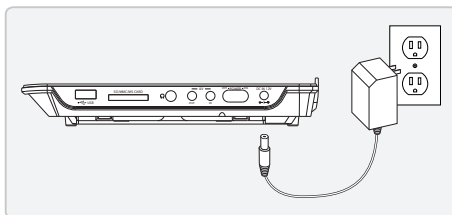


## Setup

### Power

DC power input: requires an AC/DC adapter (included)

*The **POWER INDICATOR** will turn green whenever the portable DVD player is powered on.*



### Battery Power

DC battery power: built-in rechargeable battery

*The **CHARGE INDICATOR** will turn red whenever the built-in rechargeable battery is charging.*

*The **POWER INDICATOR** will turn green whenever the portable DVD player is powered on.*

*When the battery is fully charged, the **CHARGE INDICATOR** will turn off.*

### Charging the Built-in Battery

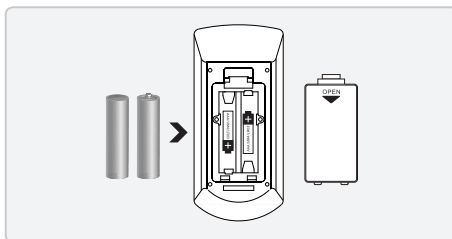
1. Plug the included AC/DC power adapter into the **DC POWER INPUT** on the portable DVD player and an AC power outlet.
2. Adjust the **POWER** switch to the off position.

*The **CHARGE INDICATOR** will turn red whenever the built-in rechargeable battery is charging.*

*When the battery is fully charged, the **CHARGE INDICATOR** will turn off.*

### Remote

Requires 2 AAA batteries (included)



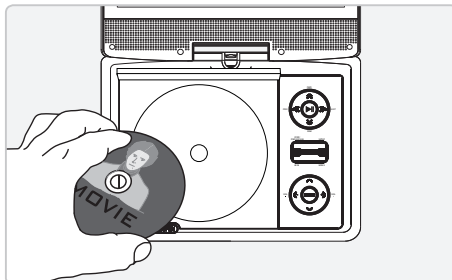


## DVD, CD, and Setup Menu

### Loading a Disc

1. Use the **OPEN** switch to open the **DISC DOOR**.
2. Load a disc into the DVD player, label side facing up.
3. Manually close the **DISC DOOR**.

*After a disc is loaded, it will begin playing automatically.*



### Playing a Loaded Disc

1. Follow the instructions for Loading a Disc.
2. If the disc does not begin playing automatically, press the **PLAY/PAUSE** button.

### Programming a Loaded Disc

1. Follow the instructions for Loading a Disc and Playing a Loaded Disc.
2. While the loaded disc is playing, press the **PROGRAM** button on the remote.
3. Use the **NUMBER KEYPAD** to enter in the titles and chapters in the order you want to view them.

*DVD Titles and chapters or CD tracks will play in the order they are programmed.*

4. Repeat step 3 until the desired DVD titles and chapters or CD tracks are programmed.

### Accessing the Setup Menu

1. Press the **SETUP** button to access the setup menu.

### Setup Menu Contents

#### General Setup Page

TV Display  
Angle Mark  
OSD Lang  
Captions  
Screen Saver  
Last Memory

#### Audio Setup Page

Speaker Setup

#### Video Setup Page

Pannel Quality

#### Preference Page

TV Type  
Audio  
Subtitle  
Disc Menu  
Default

## Using a USB Thumb Drive or Memory Card

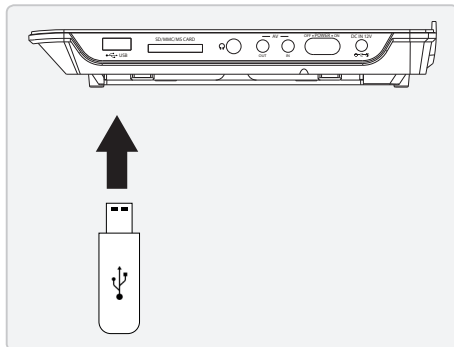
### Connecting a USB Thumb Drive

1. Connect a USB Thumb Drive to the **USB PORT**.

*MPEG 1 and MPEG 2 video formats are supported.*

### Accessing Content on a USB Drive

1. Follow the instructions for [Connecting a USB thumb drive](#).
2. Press and hold the **STOP/DVD/USB/SD** button to switch to USB mode.
3. Use the **ARROWS** and **ENTER** buttons to select and play content from the connected USB thumb drive.



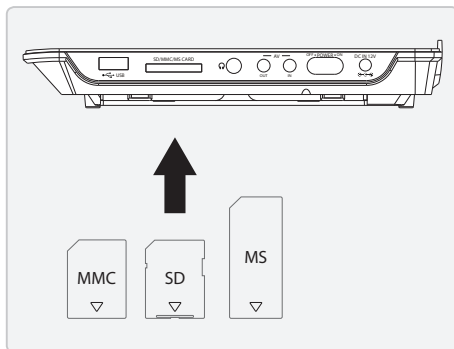
### Connecting a Memory Card

1. Connect a SD or MMC memory card to the **MEMORY CARD SLOT**.

*MPEG 1 and MPEG 2 video formats are supported.*

### Accessing Content on a Memory Card

1. Follow the instructions for [Connecting a Memory Card](#).
2. Press and hold the **STOP/DVD/USB/SD** button to switch to MCR mode.
3. Use the **ARROWS** and **ENTER** buttons to select and play content from the connected SD, MMC, or MS memory card.



## Audio/Video Output and Input

### Using the 3.5mm Audio/Video Output

Requires a 3.5mm to 3 x RCA audio/video adapter (included) and an RCA audio/video cable (not included).

1. Connect the 3.5mm to 3 x RCA audio/video adapter to the **3.5mm AUDIO/VIDEO OUTPUT** on the portable DVD player.
2. Connect the RCA audio/video cable to the 3.5mm to 3 x RCA audio/video adapter and the RCA stereo audio inputs and composite video input on a television.
3. Audio and video played through the portable DVD player will now be output through the connected television.

### Using the 3.5mm Audio/Video Input

Requires a 3.5mm to 3 x RCA audio/video adapter (included) and an RCA audio/video cable (not included).

1. Connect the 3.5mm to 3 x RCA audio/video adapter to the **3.5mm AUDIO/VIDEO INPUT** on the portable DVD player.
2. Connect the RCA audio/video cable to the 3.5mm to 3 x RCA audio/video adapter and the RCA stereo audio outputs and composite video outputs on an audio/video source such as a television.
3. Press the **AV IN** button to switch to AV in mode.
4. Audio and video played through the connected television will now be output to the portable DVD player.

## Company Information

### International Support

To download this User's Guide in English, Spanish, or French, visit the support section at [www.gpx.com](http://www.gpx.com).

Para transferir esta guía de usuario en inglés, español, o francés, visite la sección de la ayuda en [www.gpx.com](http://www.gpx.com).

Pour télécharger ce guide de l'utilisateur en anglais, espagnol, ou français, visitez la section de soutien chez [www.gpx.com](http://www.gpx.com).

### Contact Information

**Phone:** 1-888-999-4215

**Email:** [prodinfo@gpx.com](mailto:prodinfo@gpx.com)

**Parts Email:** [partsinfo@dpi-global.com](mailto:partsinfo@dpi-global.com)

**Website:** [www.gpx.com](http://www.gpx.com)

### Green Initiative



Environmental Commitment to 'Protect for Today and Sustain for Tomorrow'

2009 marked the official launch of DPI, Inc.'s corporate campaign for a greener and cleaner world. DPI is building upon environmental initiatives introduced at all of their facilities to help formulate and sustain significant and important conservation efforts within its manufacturing and marketing communities. In addition to targeting and selecting energy efficient product features, and structuring 'green office' procedures, other initial program efforts include:

- Reduction of all packaging sizes
- Recyclable plastics for clamshell packages, with a plan to eventually replace plastic with recyclable paper
- Recycled fiber board in place of the polyfoam in packing boxes
- Recycled plastics in place of the virgin material in product construction